

About Lithium Single Sign-On (SSO)

Lithium Single Sign-on (Lithium SSO) enables you to integrate your sign-in and registration system with your Lithium community user system. To create a seamless sign-in experience for your end users, the Lithium SSO solution enables your user system to:

- Create a new user account on the Lithium system
- Sign in a user to the Lithium system
- Change a user's personal profile parameters on the Lithium system by assigning a role
- Change a user's permission levels on the Lithium system

Members sign in as usual through your main site. After they sign in, they are forwarded to the Lithium site and are automatically signed in or registered on the Lithium system.

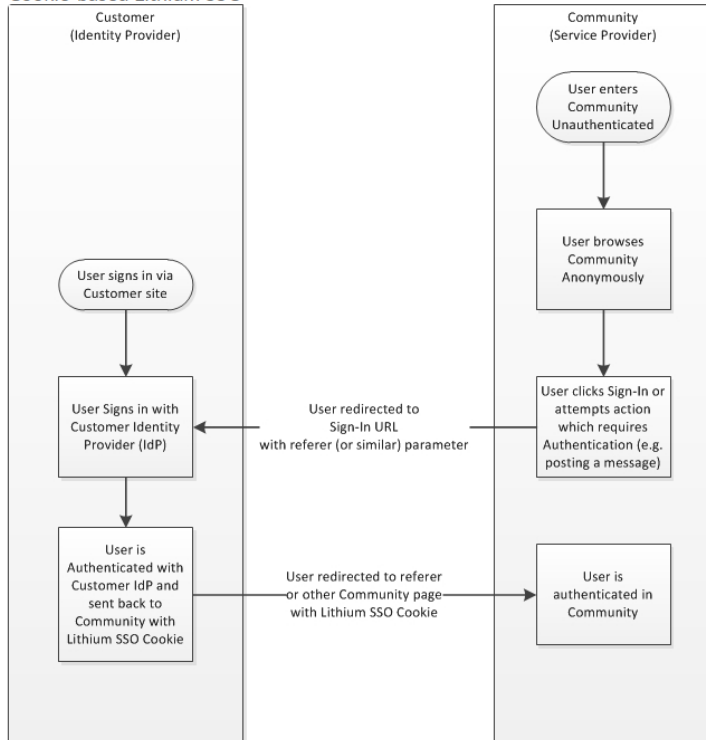
To integrate with the LithiumSSO, the client system must:

- Be able to create LithiumSSO tokens from its user system
- Have the LithiumSSO libraries installed
- Have a client-specific C encryption key installed

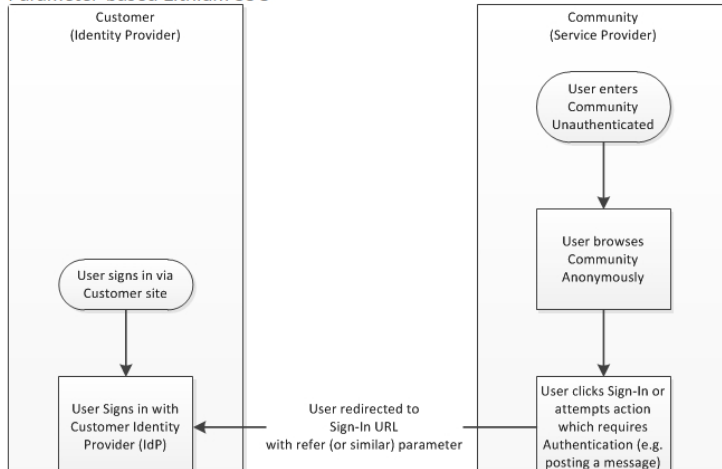
SSO workflow diagrams

Lithium supports cookie-based and parameter-based workflows.

Cookie-based Lithium SSO



Parameter-based Lithium SSO



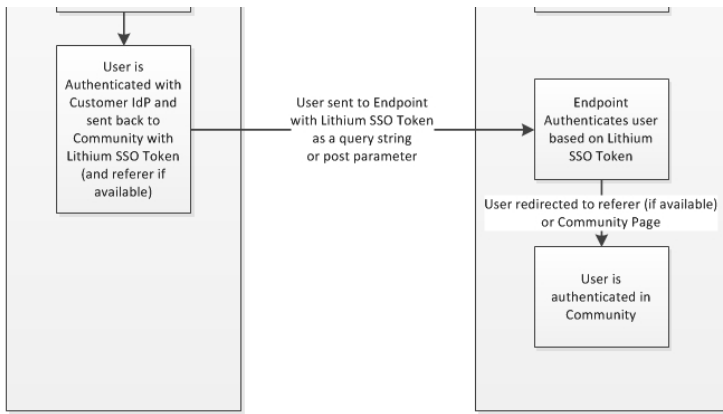
Version history

Revision #: 49 of 49
 Last update: 2 weeks ago
 Updated by: JohnD

[View article history](#)

Contributors

- JohnD
- SuzieH
- JasonL
- AlexW
- DougS



Lithium SSO libraries

Lithium issues the LithiumSSO libraries (Java, .NET, or PHP) and a unique encryption key for each deployment.

Information for all three versions is provided in the attached SSO Guide. Additionally, you can refer to the attached flowchart for a diagram that explains how SSO works with the Lithium Platform.

Related information:

- [Configure SSO options](#)
- [Change an SSO user's email](#)
- [Change SSO language parameters](#)
- [How does auto-login work?](#)
- [What happens when a user logs out of the community?](#)
- [Learn about SAML SSO options](#)
- [Why is my IP comparison failing?](#)

Note: For the attachments, use SSOClient.JAVA_1.5.7_jdk15.zip for Java 1.5 and use SSOClient.JAVA_1.5.7.zip for Java 1.6+.

Labels: SSO

Add tags

Attachments

- [SSO_login.pdf](#)
- [SSOClient.JAVA_1.5.7_jdk15.zip](#)
- [SSOClient.JAVA_1.5.7.zip](#)
- [SSOClient.PHP_1.5.7.zip](#)
- [SSOClient.NET_1.57.zip](#)
- [SSO_Guide_17_12.pdf](#)

10 Kudos

Share Comment

COMMENTS

HaydnJ 07-21-2014 08:06 AM

Hi John

Is there any documentation on the field length rules / restrictions for the unique id, email address and display name / logon name?

Also - has anyone on the community done integration into Lithium from a financial services app on mobile platforms. What is the favoured implementation approach - embedded webview vs say transition out of financial app and into the devices browser app?



JohnD

07-31-2014 11:36 AM



@HaydnJ - I plan to update the SSO Guide with the info you asked for. In the meantime, here's the info:

uniqueid is the same as SSO ID and can contain up to 120 single-byte characters.

The only length restrictions are the size of the database columns for these fields in the users table.

uniqueid cannot be null or empty string ("") or contain delimiter token ("|").

Email can contain up to 255 single-byte characters and be null, **but** if email is specified, then it cannot contain delimiter token ("|").

Login can contain up to 255 single-byte characters, cannot be null or empty string (""), and cannot contain delimiter token ("|").

Note: Many customers opt to have the community capture login and/or email when the user first authenticates to the community via SSO. If the community is configured this way, the login and/or email passed in the SSO token doesn't matter.



VarunGrazitti

08-24-2015 12:40 AM



@JohnD - What are the steps we should take to open the SSO in a popup rather than redirecting the user to the SSO page? Is it feasible?



eurcew

09-11-2015 08:20 AM



Is there anyway to get the SSO token using Python?



JohnD

09-16-2015 08:26 AM



@eurcew - I don't think so.



davidrjarvis

12-17-2015 02:06 PM



Hi,

Currently we have our Community up and running for about 12 months now. We did not implement SSO when we first launched due to time constraints, but would now like to implement SSO to eliminate users currently having to log into our customer web self care site (WSC) and also log into the Community.

Question 1 - It sounds like everyone the first time they enter the Community with SSO enabled, a new user profile is created using their username and email address from the company WSC site. Is this true?

Question 2 - If question 1 is true, what happens if there are the email addresses are the same for both the WSC and Community. How does SSO deal with that?

Question 3 - Are there any suggestions or best practices when implementing SSO on an already existing Community?

Question 4 - Because our WSC site is only available to existing customers, can someone trying to become a customer (eg. has not yet activated their service account) post a question to our Community? Or do they need to have WSC access in order to post a question to the Community?

Thanks in advance for your responses.



colleen_johnson

12-30-2015 06:40 AM



Hi @davidrjarvis

If you want to implement SSO now and are currently using Lithium registration you will need to engage with Lithium Professional Services. We can update the production users with the SSO ID provided by you so that when a user logs in the first time when SSO is enabled a new user account won't be created. We would want to test out the SSO set up and flow and user update on your Staging server first then we would proceed with a Production update. :-)



krysc088

09-14-2017 11:59 AM



The SSO library zip files are not allowing me to download them. See screenshot below. Can someone send "SSOClient.JAVA_1.5.7.zip" to me by email?

Attachments

- [SSO_login.pdf](#)
- [SSOClient.JAVA_1.5.7_jdk15.zip](#)
- [SSOClient.JAVA_1.5.7.zip](#)
- [SSOClient.PHP_1.5.7.zip](#)
- [SSOClient.NET_1.57.zip](#)
- [LithiumSSO_Guide_15_12.pdf](#)

Comment

You have autosaved content from 08:15 PM.

[Load](#) or [Discard](#)

RICH TEXT HTML PREVIEW

B *I* U [Quote](#)

Font Size A

Email me when someone replies

Cancel

Post Your Comment

powered by **Lithium**

[News Room](#)

[Blogs](#)

[Resources](#)

[Customer Support](#)

[Careers](#)

[Developer Documentation](#)

[Request a Demo](#)

[Education & Training](#)



Lithium

© Lithium Technologies, LLC - All Rights Reserved [Privacy](#) [Security](#) [Disclaimer](#)

[↑ Top](#)